

KEES van der WESTEN - ESPRESSONISTIC WORKS B.V.

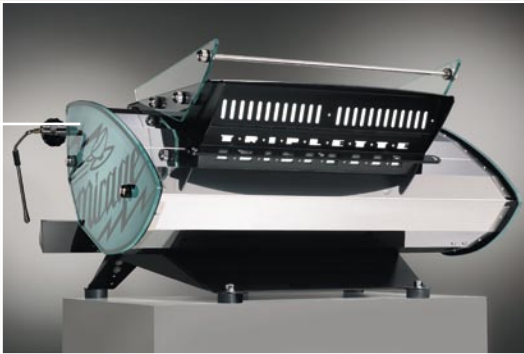
# M i r a g e



# Mirage Bastone

## standard features

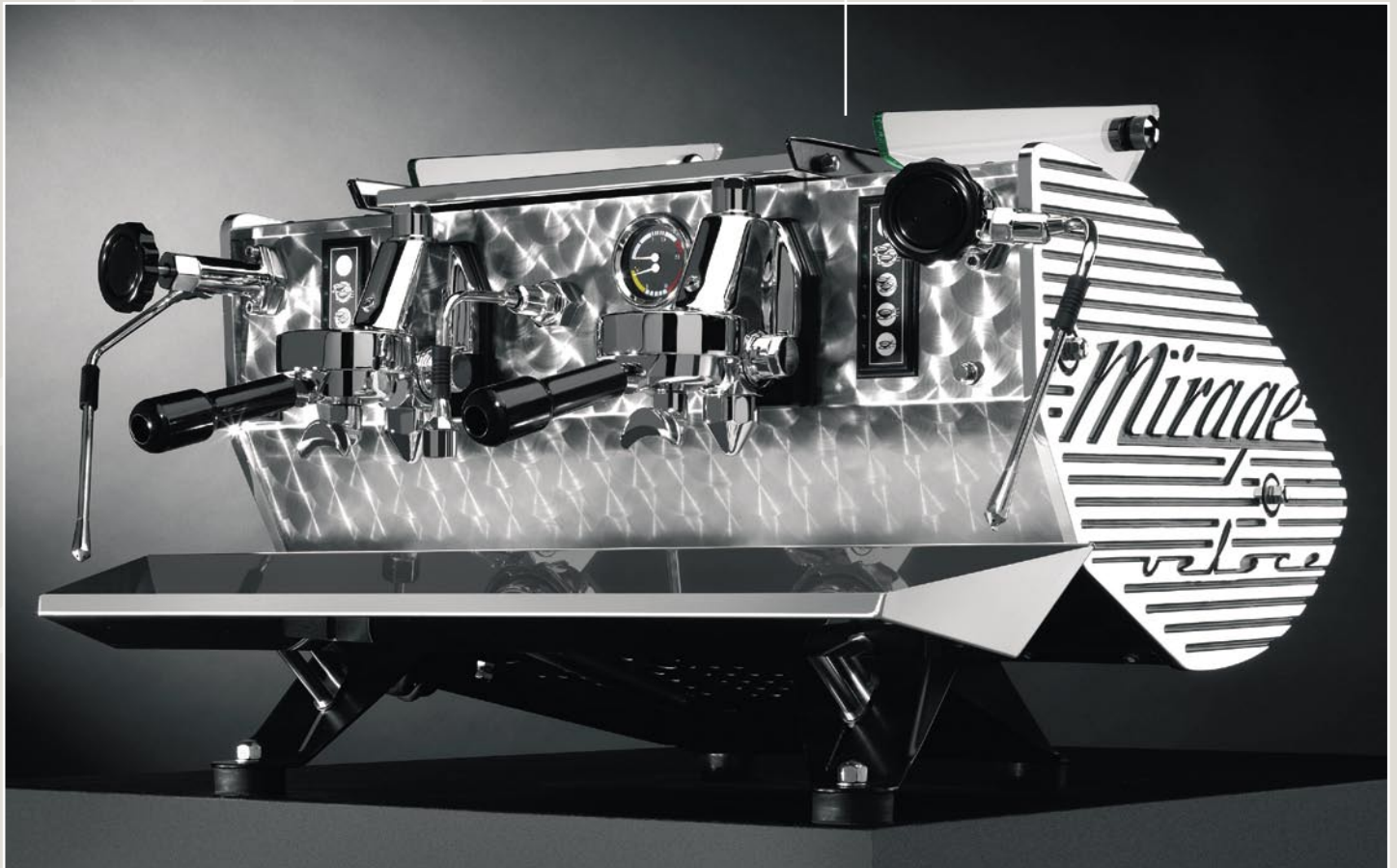
- automatic back-flush program
- non-spattering hot water delivery
- large boiler with one heat-exchanger per group, thermo-syphon system
- extra long lower tubes for cool running
- enlarged cavity in group for heat-loop water
- variety of precise restrictors available, easy to exchange
- group solenoid valves attached to frame inside machine as extra heat-sink, no electric devices in splash zone, no spattering at discharge of group
- heating element severely protected by time-out boiler fill valve, a safety probe and overheating protection connected directly to element inside boiler
- electronic pre-infusion with correctly tuned delays, to be switched on or off
- long injector tube into heat-exchanger to use its full capacity
- small sensitive pressostat switching solid state relays
- large drain tray, adjustable in height



Pictured: Mirage Triplette Classic Bastone

# Mirage Standard

- filter holders with downward angled handle for an ergonomically better wrist position
- long steam wands in stainless steel with ample free space, pivoting in all directions
- powerful and long lasting steam power
- manual steam valves require 1 quarter turn from closed to fully open
- hot water delivery with automatic stop, quantity easily adjustable
- jets of 0.6mm at entrance of group solenoid for temperature stability and infusion
- entire frame built from heavy 3mm stainless steel, powder coated in black epoxy
- very barista-comfortable machine, with all parts in easy sight and reach
- automatic re-filling of main boiler only when no coffee is brewed
- external pump
- long list of options to customize machine to your needs



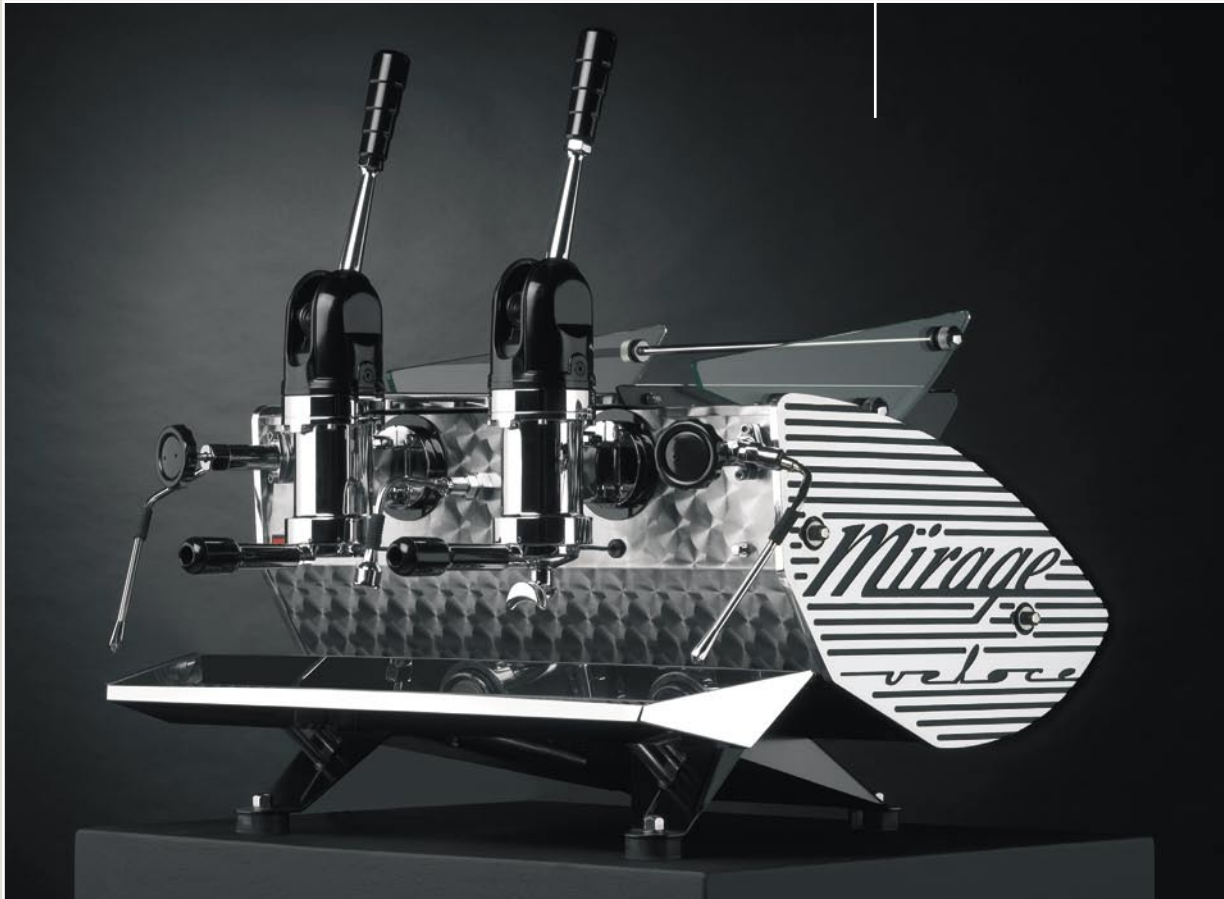
Pictured: Mirage Duette Veloce

# Mirage Idrocompresso

## features

---

- most dramatic espresso machine imaginable, levers moving up and down is pure theatre
- very dry coffee puck
- groups remain clean for a remarkably long time, as there is no pressure relief from top of coffee puck
- no back flushing needed
- group shuts off automatically after delivering 60cc
- very reliable, silent and easy to service
- equipped with thermo-siphon heat exchanger for each group, no water from main boiler to brew coffee
- isolating ring inside group to further stabilize temperature
- equipped with ball valve ahead of each thermo-siphon system to open up group without switching off entire machine
- magnificent infusion: a column of water, nicely divided over entire coffee bed, sinks into the ground coffee
- both temperature and pressure diminish slightly during brewing for optimum extraction
- pulse free pressure on coffee
- double pressure gauge installed to keep an eye on incoming water pressure
- non-spattering hot water delivery
- hot water delivery with adjustable electronic timer



Pictured: Mirage Duette Veloce Idrocompresso

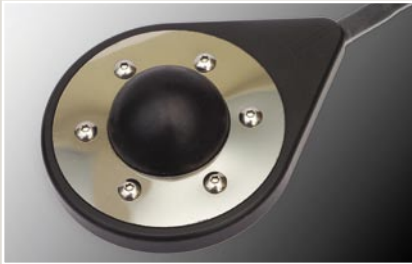
## available versions:

**Duette** (two-group) or **Triplette** (three-group)

Bodywork as **Classic** (high gloss stainless steel bodyparts with glass side panels) or **Veloce** (engine turned stainless steel with milled and painted high gloss aluminium side panels)

Operated through touch pads (**Standard**), semi-automatic flipper style rods (**Bastone**) or the old style levergroups (**Idrocompressore**).

## available options:



foot activated steam valve, left and/or right side



pitcher tray, adjustable in height independently from draintray, left and/right hand side



enlarged cup tray on top of machine, covering full length of machine



extra elevated cup tray above machine, covering full length of machine



bottomless filterholder(s)



filterholder(s) with inside coating of Teflon



progressive pre-infusion cylinders

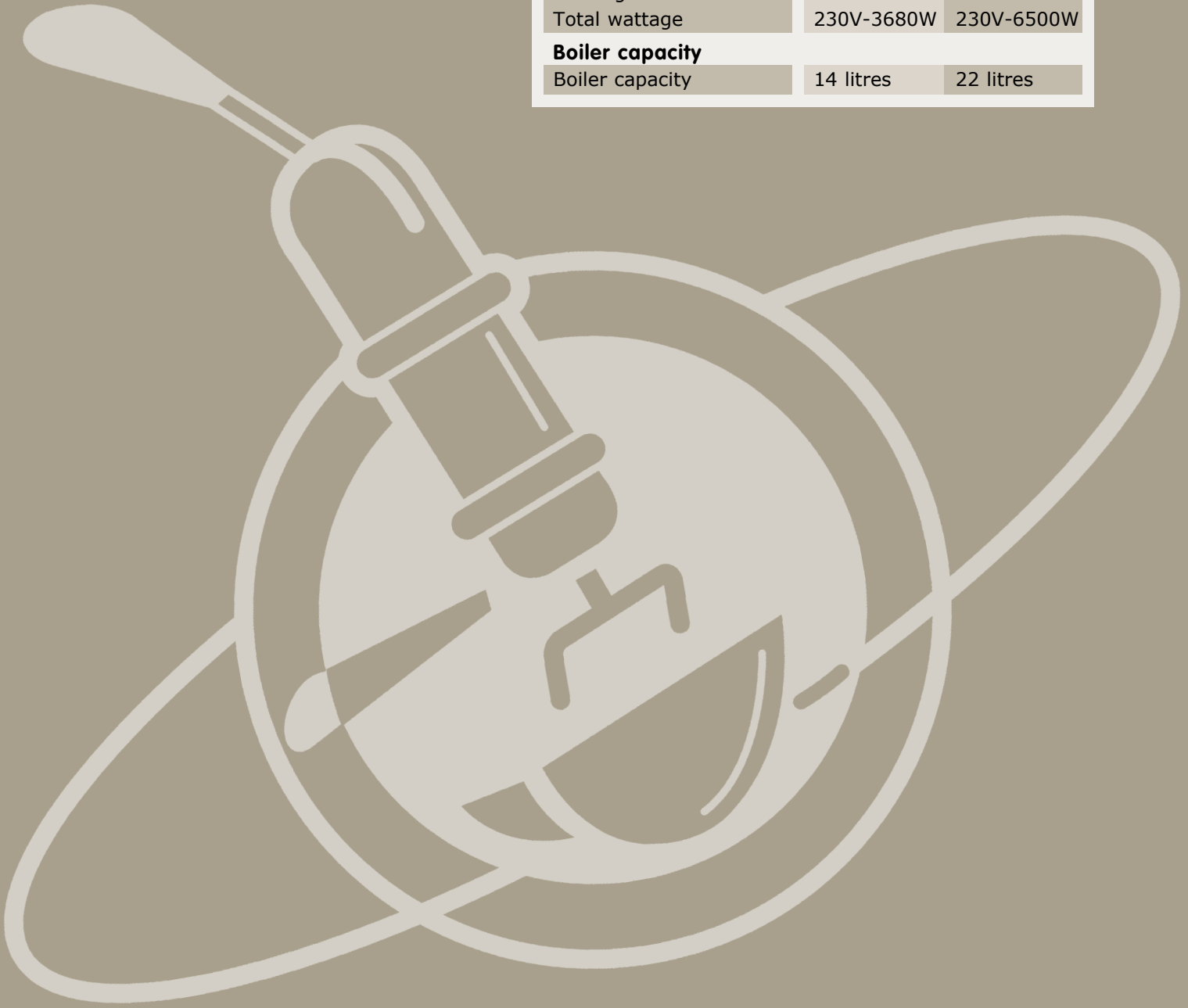


espresso cup grille on top of drain tray

- your logo sandblasted into the thick glass panels of Classic, or color printed on folio stuck onto inner side of glass
- raised heating power in Duette, from 3200Watt to 4800Watt

## specifications

Dimensions in cm	DUETTE	TRIPLETTE
Height	52	52
Height Idrocompressor	78	78
Depth	67	67
Width of body	73	92
Width incl. steamwands	91	111
<b>Footprint</b>		
Depth	50	50
Width at operators side	55	74
Width at rear	32	52
<b>Power</b>		
Heating element	3200 Watt	6000 Watt
Total wattage	230V-3680W	230V-6500W
<b>Boiler capacity</b>		
Boiler capacity	14 litres	22 litres



info@keesvanderwesten.com  
www.keesvanderwesten.com